

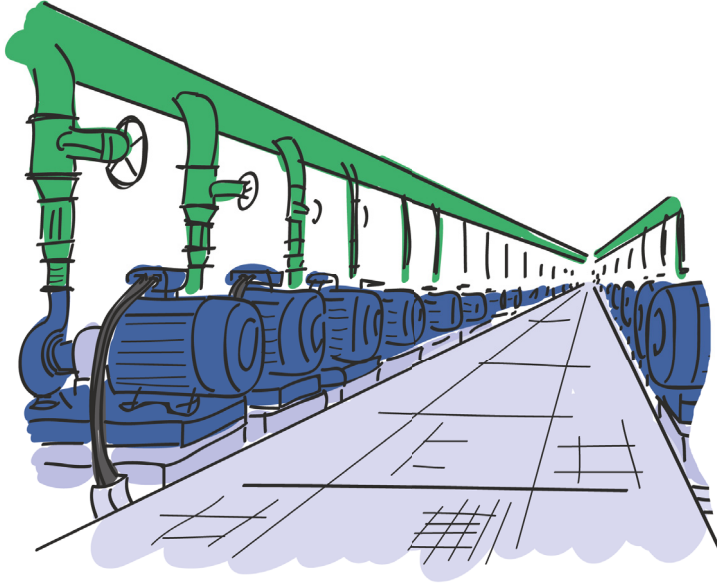
A4910 Lubri

Step by Step



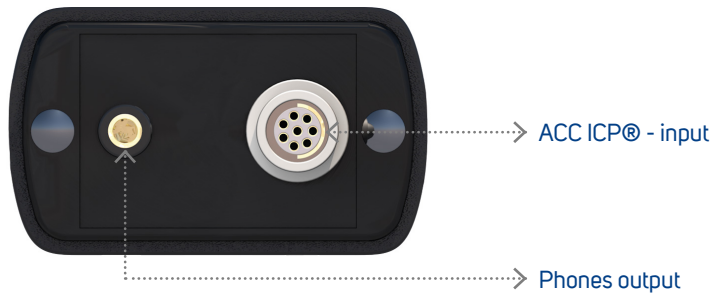
MASTER THE LANGUAGE OF YOUR MACHINERY



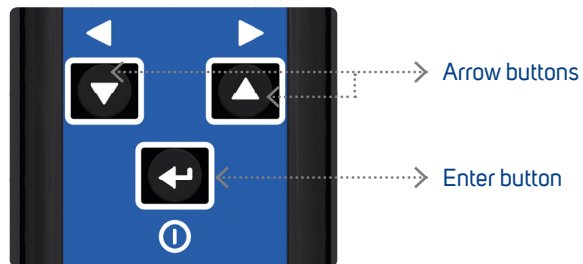


Basic information	4
Switch on/off	5
Basic and Advanced mode.....	6
Basic mode	7
Basic control	8
Basic menu	9
Screens	10
Saving data from measurement screen 1	11
Memory - Route measurement	12-13
Setup	14
Volume	15
Brightness	15
Technical specifications	16
Error Indications	17
Notes	18

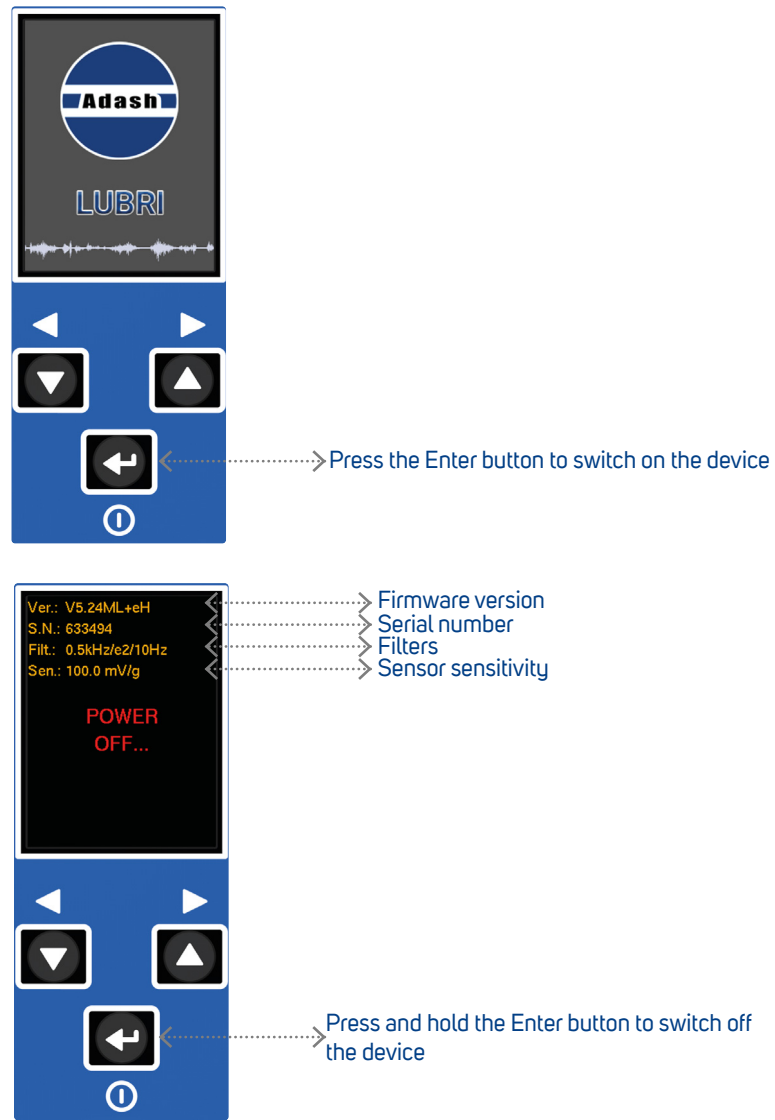
Top Panel



Buttons



Batteries

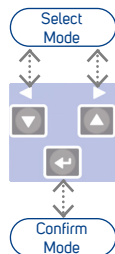
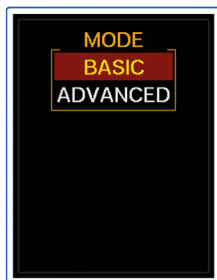


Two modes of **A4910 LUBRI** instrument are available: **BASIC** and **ADVANCED**. The **BASIC** mode enables to control lubrication process only. The **ADVANCED** mode enables also to measure machine vibrations and bearing condition. Also enables to use the memory.

To select the mode press both **Arrow Buttons** simultaneously and hold for 3sec. The **MODE** menu appears. Selected mode is saved. The instrument will start next time in that mode.



Press simultaneously and hold for 3sec.
The **MODE** menu appears.



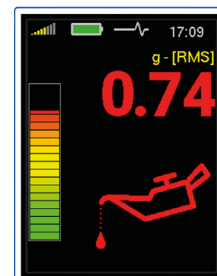
Use the **Arrow** buttons to switch between the modes

Press the **Enter** button to confirm the selection

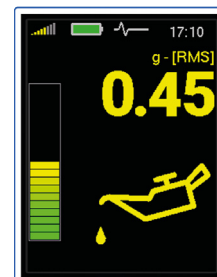


After connecting headphones it is possible to listen the noise of bearing. In **BASIC** mode the volume can be adjusted directly with the **Arrow** buttons. In **ADVANCED** mode the volume can be set by option **MENU/VOLUME**.

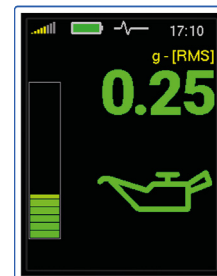
The **BASIC** mode enables to control lubrication process only. Before we start lubricating another bearing we need to reset the instrument after the previous measurement. It is necessary, since, during bearing operation, values showing bearing status are different for every bearing. The values are different even for bearings of the same type used on different machines or under different loads. Reset is done by a short push of the **Enter** button.



Start lubricating by **Enter** button, bar indicator is full, value and oilcan are red



Lubrication in process, bar indicator is lower, value and oilcan are yellow



Stop lubrication, bar indicator is in a very low level and value with oilcan are green



If, at the beginning of measurement, value of vibrations and oilcan are green, then the signal from a bearing is very low. We have either new or a very well greased bearing. In this case we suggest using earphones and left bar to finish lubrication.

Arrow Buttons

- > switch between the measurement modes
- > select the right or left item from the menu at the bottom
- > move between items (up/down) in menu

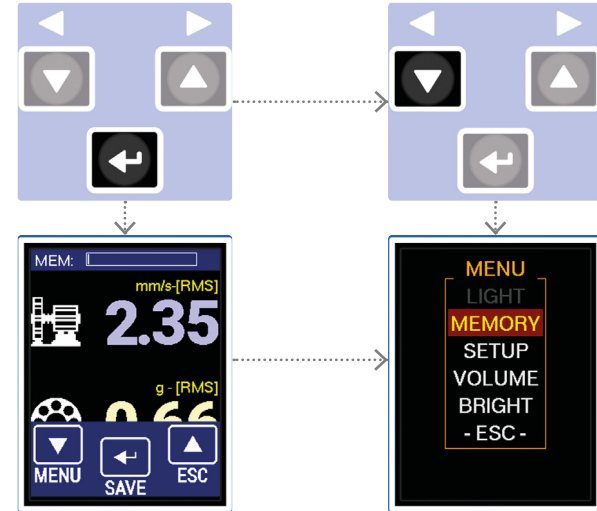


Enter Button

- > switches the instrument on/off
- > reset lubrication measurement
- > confirms the selection
- > selects the middle item from the menu at the bottom
- > opens the Basic menu



1. To open the Basic menu press the Enter button (on any measurement screen only)
2. Then press the left Arrow button to open the Menu



3. You can select the following items from the menu:

- > **Memory**
for route measurement (see page 12 - 13)
- > **Setup**
setup of units, time, etc. (see page 14)
- > **Volume**
for headphones volume setup (see page 15)
- > **Bright**
setup of display brightness (see page 15)
- > **-Esc-**
back to the measurement screen



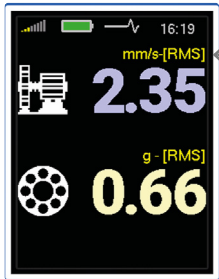
(Press to change screen)

Lubrication Screen



RMS vibration values:
0.5 - 16 kHz in g

Measurement Screen 1

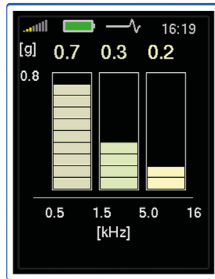


RMS or Peak can be changed in the Setup Menu.

Vibration values:
10 - 1000 Hz in mm/s (ips) RMS
or
10 - 1000 Hz in mm/s (ips) Peak

0.5 - 16 kHz in g RMS

Measurement Screen 2



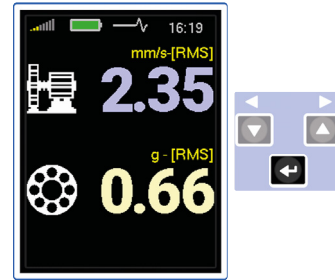
RMS vibration values:
0.5 - 1.5 kHz in g
1.5 - 5 kHz in g
5 - 16 kHz in g



Saving is not available.

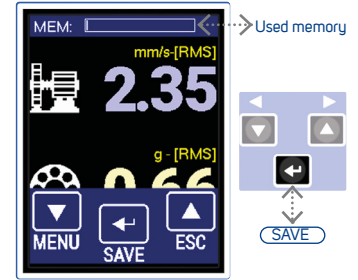
Saving Data From Measurement Screen 1

1.



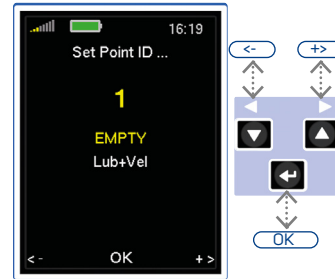
Press the Enter button on Measurement screen 1

2.



Press the Enter button [SAVE]

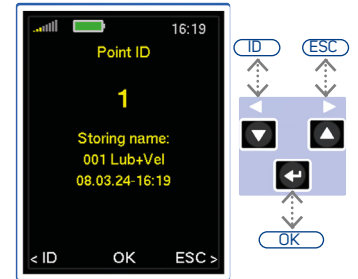
3.



Select the Point ID (1-250) with the Arrow buttons

Press the Enter button [OK] to confirm

4.



[ID] go back to the Point ID setting

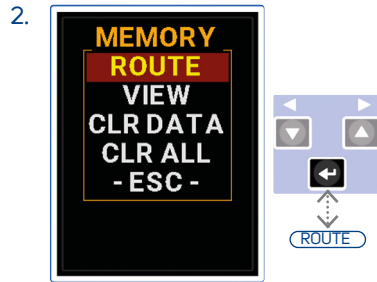
[ESC] go back to the measurement

Press the Enter button [OK] to save the data

Memory - Route Measurement

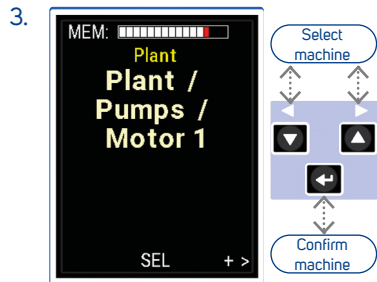


Firstly the route must be loaded to the device from the DDS software



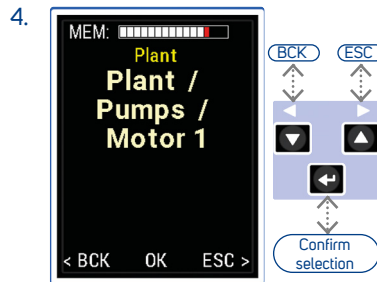
Go to MENU/MEMORY/ROUTE

VIEW ... view off-route readings
CLR DATA ... delete all readings
CLR ALL ... delete all readings and route structure



Use the Arrow buttons to switch between the machines in route

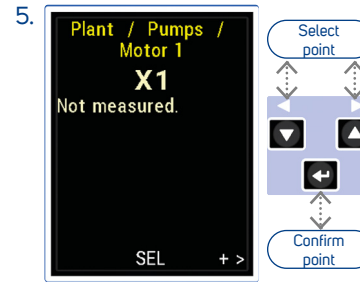
Press the Enter button [SEL] to confirm the selection



[BCK] go back to machine selection

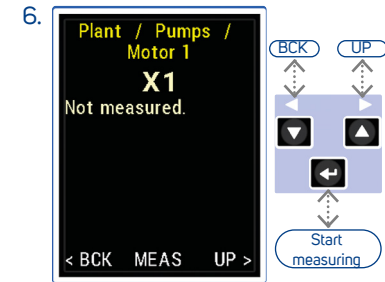
[ESC] escape from the route

Press the Enter button [OK] to confirm the selection



Use the Arrow buttons to switch between the points in route

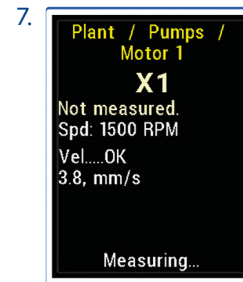
Press the Enter button [SEL] to confirm the selection



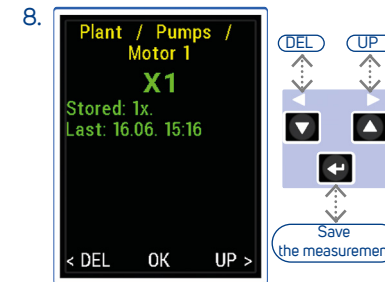
[BCK] go back to point selection

[UP] go back to machine selection

Press the Enter button [MEAS] to start measuring



Measurement progress can be seen on the screen

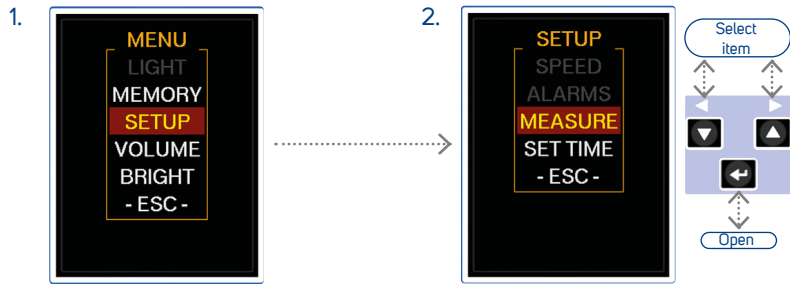


[DEL] delete the measurement

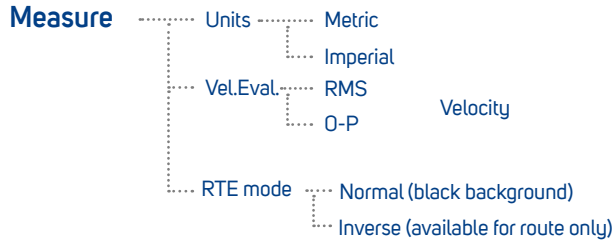
[UP] save and move to the next point

[OK] save the measurement

Setup

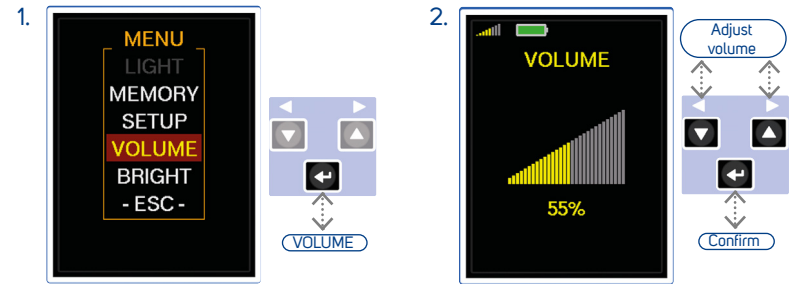


Go to MENU/SETUP



Set time Setup of time and date

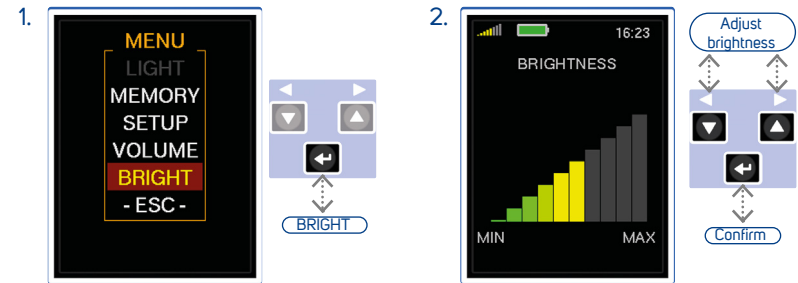
Volume, Brightness



Go to MENU/VOLUME

Adjust the phones volume with the Arrow buttons

Press the Enter button to confirm



Go to MENU/BRIGHT

Adjust the brightness with the Arrow buttons

Press the Enter button to confirm

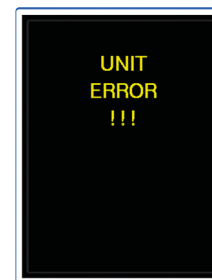
Input:	1 x ICP® powered accelerometer
Input range:	60 g PEAK with standard 100 mV/g sensor (e.g. 600 g PEAK for 10 mV/g sensor, the sensitivity is editable in the unit)
Measurements:	Velocity RMS: 10 - 1000 Hz [mm/s, ips] Velocity PEAK: 10 - 1000 Hz [mm/s, ips] Acceleration RMS: 500 - 16 000 Hz [g] Acceleration Peak: 500 - 16 000 Hz [g] * Acceleration Bands RMS: 500 - 1500 Hz [g] 1500-5 000 Hz [g] 5 000 - 16 000 Hz [g]
Other functions:	Vibration stethoscope
Memory:	4 MB for data 120 960 overall values
Data storing:	Off-Route Route with DDS software for Lubri (free download)
Interface:	USB C - 3.0, 2.0 compatible
Software:	Free version of DDS software (limited database size)
Display:	Colour graphic TFT display 240x320 pixels, diagonal 2.2" (54 mm), sunlight readable
Output:	1 x AC signal 8 Ω / 0,5 W for external headphones (signal listening)
Power:	Rechargeable Li-Ion battery, 16 hours of continuous operation, USB-C charging
Temperature:	Operating: -5°C to 55°C
Dimensions:	150 x 60 x 35 mm
Weight:	440 g (with grease gun mounts, without cable, sensor and magnet)
Accessories:	vibration sensor, coiled cable to connect vibration sensor, magnetic base for vibration sensor, headphones with 3.5 mm jack, USB cable

*available in DDS software for Lubri

Errors are indicated on an instrument display.

If there is a problem with cable or sensor, the display will show **SENSOR ERROR**. If we get an SENSOR ERROR, we need to check connecting cable (broken or short circuit) and sensor.

If there is another internal fault, the display will show **UNIT ERROR**. If the error constantly repeats itself, contact your supplier or manufacturer.







Adash

Hlubinska 1379/32

702 00 Ostrava

Czech Republic

tel.: +420 596 232 670

e-mail: info@adash.com

www.adash.com

© Adash 2024



MASTER THE LANGUAGE OF YOUR MACHINERY

